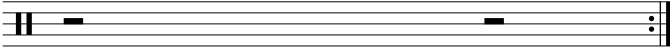




Data Sheet

Die halbe Pause ist zwei 4tel Schläge lang.

The length of the half pause equals two 4er note beats.



drumnotesarchive.com/archive_lessons/SD0c0c

Topics: Generator,
Level: 01 – Beginner,

Visit drumnotesarchive.com for Guided Lessons, Playalongs and matching Songs.

©2026 drumnotesarchive.com. Alle Rechte vorbehalten/All rights reserved.