

1

2

3

4

5

6

7

8

9

10

11

12

13

14

15

16

17

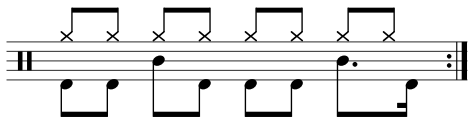
18

19

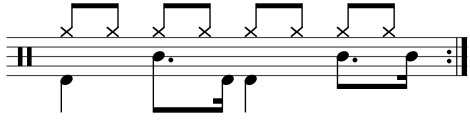
20

21

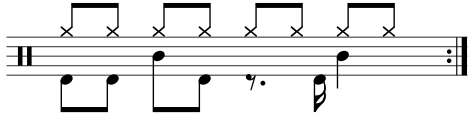
22



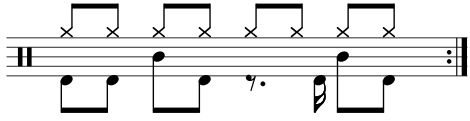
23



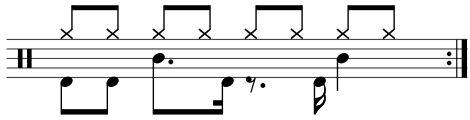
25



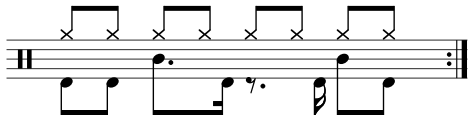
27



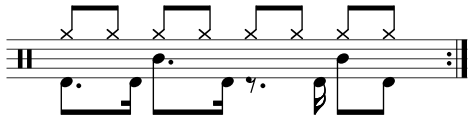
29



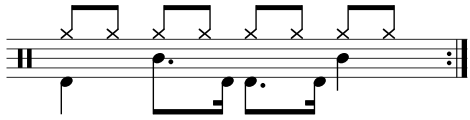
31



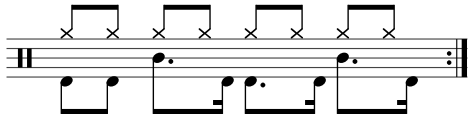
33



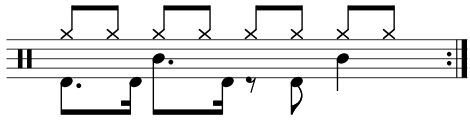
35



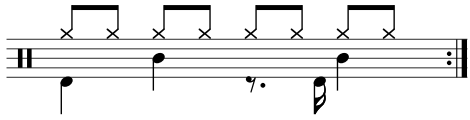
37



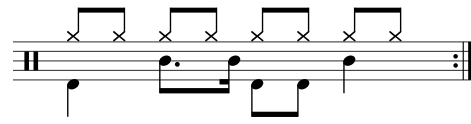
39



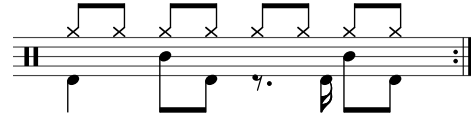
41



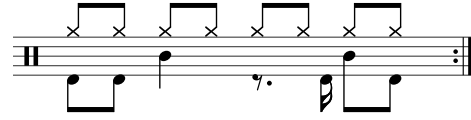
F



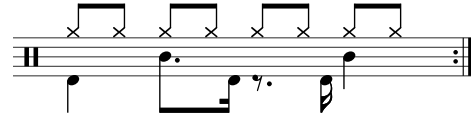
24



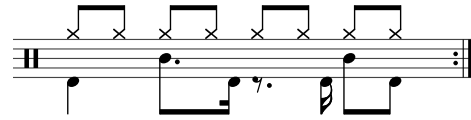
26



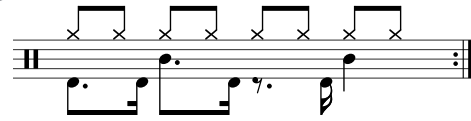
28



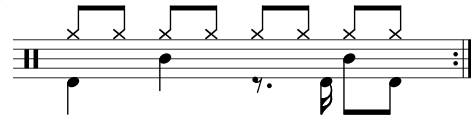
30



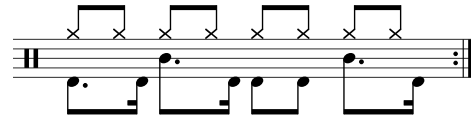
32



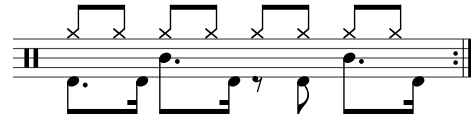
34



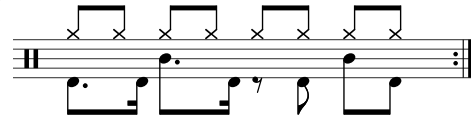
36



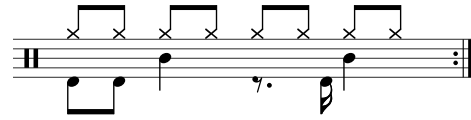
38

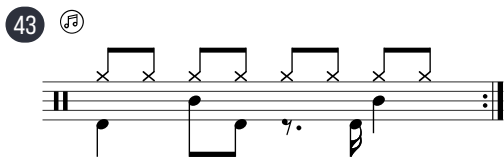


40

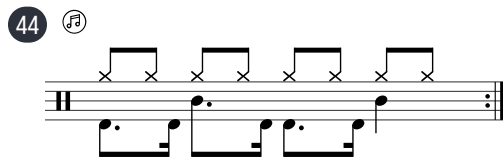


42

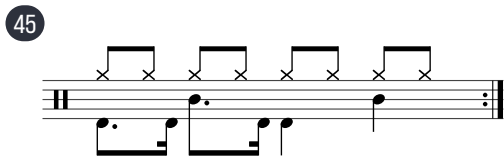


43 

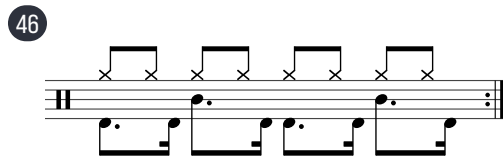
Musical notation for exercise 43, featuring a drum staff with a treble clef and a key signature of one flat. The notation includes a series of eighth notes with 'x' marks above them, and a bass line with a dotted quarter note, an eighth note, and a quarter note.

44 

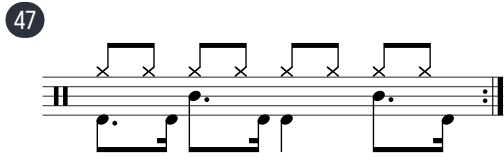
Musical notation for exercise 44, featuring a drum staff with a treble clef and a key signature of one flat. The notation includes a series of eighth notes with 'x' marks above them, and a bass line with a dotted quarter note, an eighth note, and a quarter note.

45 

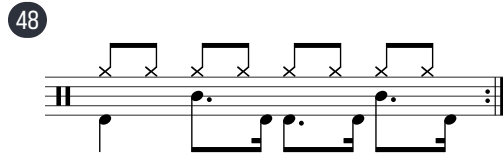
Musical notation for exercise 45, featuring a drum staff with a treble clef and a key signature of one flat. The notation includes a series of eighth notes with 'x' marks above them, and a bass line with a dotted quarter note, an eighth note, and a quarter note.

46 

Musical notation for exercise 46, featuring a drum staff with a treble clef and a key signature of one flat. The notation includes a series of eighth notes with 'x' marks above them, and a bass line with a dotted quarter note, an eighth note, and a quarter note.

47 

Musical notation for exercise 47, featuring a drum staff with a treble clef and a key signature of one flat. The notation includes a series of eighth notes with 'x' marks above them, and a bass line with a dotted quarter note, an eighth note, and a quarter note.

48 

Musical notation for exercise 48, featuring a drum staff with a treble clef and a key signature of one flat. The notation includes a series of eighth notes with 'x' marks above them, and a bass line with a dotted quarter note, an eighth note, and a quarter note.