

1



2



3



4



5



6



7



8



9



10



11



12



13 <sup>♩</sup>



14



15



16



17



18



19



20



21



22





23



24  $\text{f}^{\text{a}}$



25



26



27



28



29



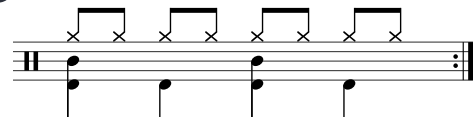
30



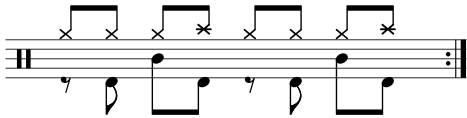
31



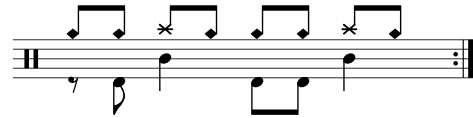
32



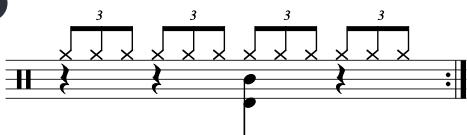
33  $\text{f}^{\text{a}}$



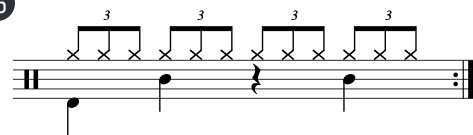
34  $\text{f}^{\text{a}}$



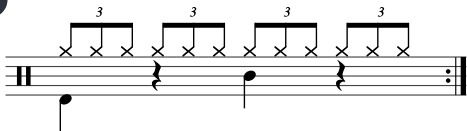
35



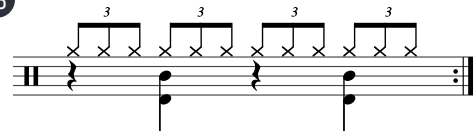
36



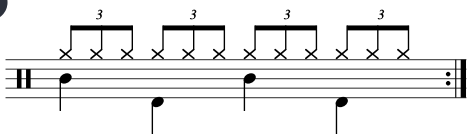
37



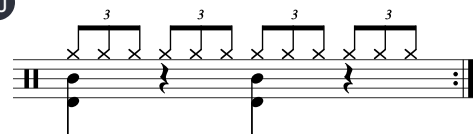
38



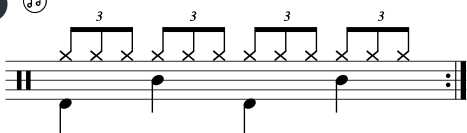
39



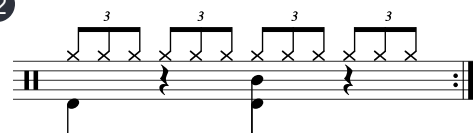
40



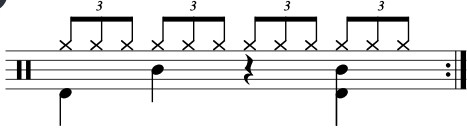
41  $\text{f}^{\text{a}}$



42

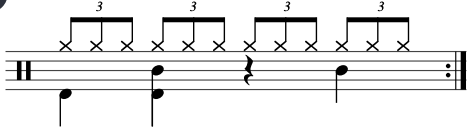


43



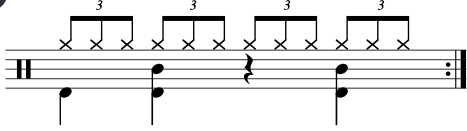
Exercise 43: A drum staff with a treble clef and a double bar line. The notation consists of four groups of three eighth notes, each marked with a '3' above it. The notes are on the first line (G4), second line (A4), and third line (B4). The groups are separated by a quarter rest. The exercise ends with a double bar line and repeat dots.

45



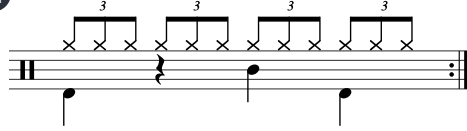
Exercise 45: A drum staff with a treble clef and a double bar line. The notation consists of four groups of three eighth notes, each marked with a '3' above it. The notes are on the first line (G4), second line (A4), and third line (B4). The groups are separated by a quarter rest. The exercise ends with a double bar line and repeat dots.

47



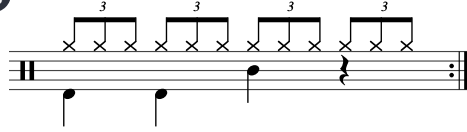
Exercise 47: A drum staff with a treble clef and a double bar line. The notation consists of four groups of three eighth notes, each marked with a '3' above it. The notes are on the first line (G4), second line (A4), and third line (B4). The groups are separated by a quarter rest. The exercise ends with a double bar line and repeat dots.

44



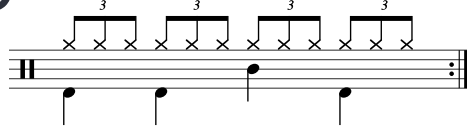
Exercise 44: A drum staff with a treble clef and a double bar line. The notation consists of four groups of three eighth notes, each marked with a '3' above it. The notes are on the first line (G4), second line (A4), and third line (B4). The groups are separated by a quarter rest. The exercise ends with a double bar line and repeat dots.

46



Exercise 46: A drum staff with a treble clef and a double bar line. The notation consists of four groups of three eighth notes, each marked with a '3' above it. The notes are on the first line (G4), second line (A4), and third line (B4). The groups are separated by a quarter rest. The exercise ends with a double bar line and repeat dots.

48



Exercise 48: A drum staff with a treble clef and a double bar line. The notation consists of four groups of three eighth notes, each marked with a '3' above it. The notes are on the first line (G4), second line (A4), and third line (B4). The groups are separated by a quarter rest. The exercise ends with a double bar line and repeat dots.