

Get the Party Started (easy version)

 = 128

PINK

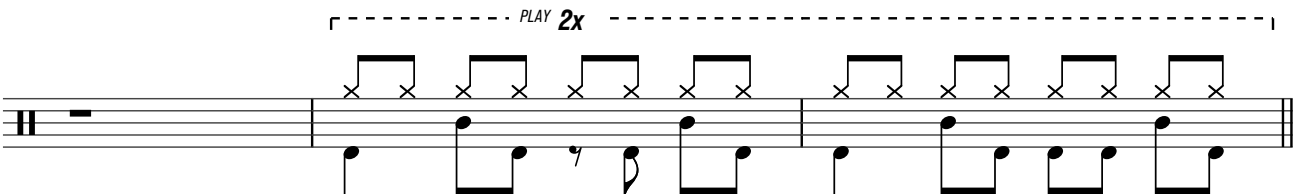
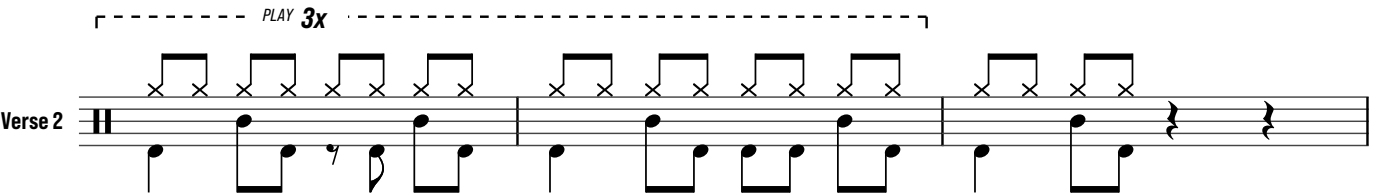
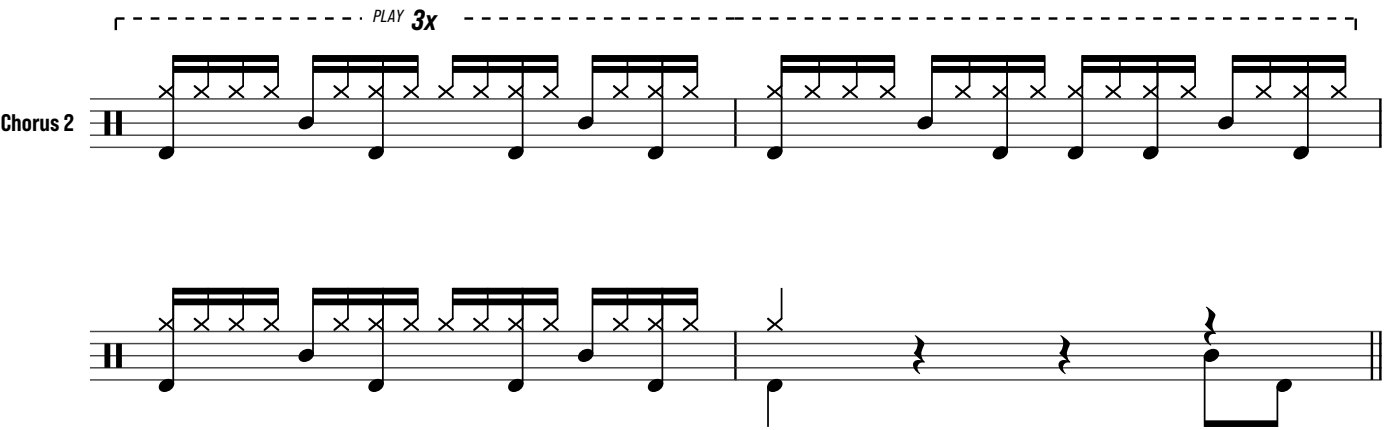
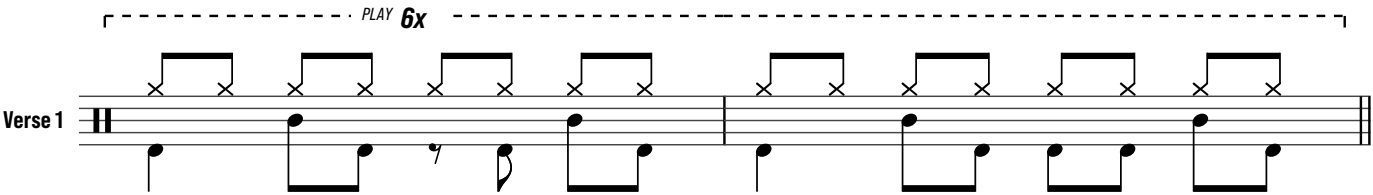
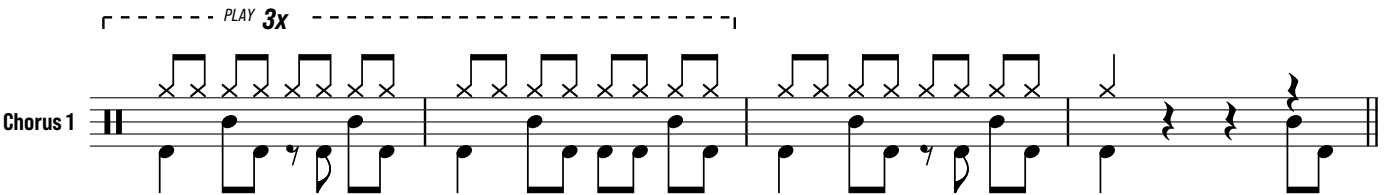
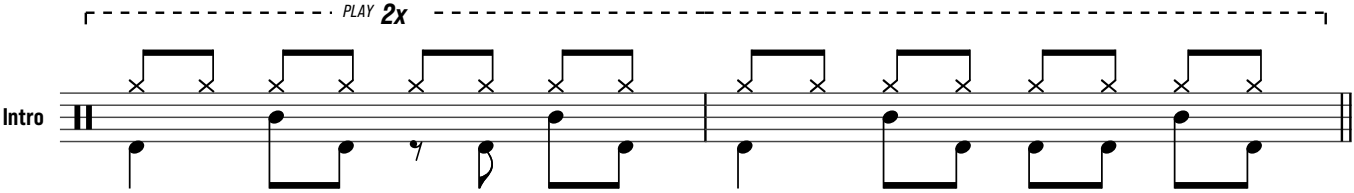
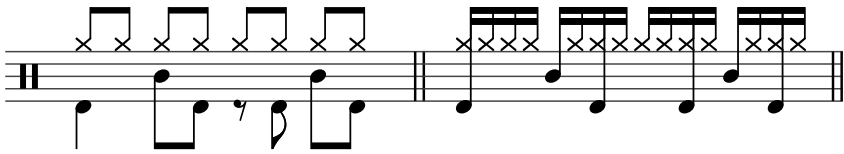
Written by: Linda Perry

Basic Groove

Play this to just jam along.
Have fun!

VERSE

CHORUS



Chorus 3

PLAY 3x

The musical notation for Chorus 3 consists of a guitar part (top staff) and a bass part (bottom staff). The guitar part features a series of eighth-note chords, each marked with an 'x' to indicate a fretted note. The bass part provides a simple harmonic accompaniment with quarter notes. A bracket above the guitar staff indicates that the first three measures should be repeated three times.

Interlude

PLAY 3x

The musical notation for the Interlude consists of a guitar part (top staff) and a bass part (bottom staff). The guitar part features a series of eighth-note chords, each marked with an 'x'. The bass part provides a simple harmonic accompaniment with quarter notes. A bracket above the guitar staff indicates that the first three measures should be repeated three times.

Verse 3

PLAY 6x

The musical notation for Verse 3 consists of a guitar part (top staff) and a bass part (bottom staff). The guitar part features a series of eighth-note chords, each marked with an 'x'. The bass part provides a simple harmonic accompaniment with quarter notes. A bracket above the guitar staff indicates that the first three measures should be repeated six times.

Chorus 4

PLAY 7x

The musical notation for Chorus 4 consists of a guitar part (top staff) and a bass part (bottom staff). The guitar part features a series of eighth-note chords, each marked with an 'x'. The bass part provides a simple harmonic accompaniment with quarter notes. A bracket above the guitar staff indicates that the first three measures should be repeated seven times.

PLAY 4x

The musical notation for this section consists of a guitar part (top staff) and a bass part (bottom staff). The guitar part features a series of eighth-note chords, each marked with an 'x'. The bass part provides a simple harmonic accompaniment with quarter notes. A bracket above the guitar staff indicates that the first three measures should be repeated four times.

The musical notation for this final section consists of a guitar part (top staff) and a bass part (bottom staff). The guitar part features a series of eighth-note chords, each marked with an 'x'. The bass part provides a simple harmonic accompaniment with quarter notes.